



MAYWON SOLAR SOLUTIONS

One-Stop solar solutions' provider worldwide

Your best solar installation partner
You have projects, we have parts



China: Maywon PV Co., Ltd.

🏠 Add: Room 1713-1714, No. 286, Hongqiao South Road, Evergrande Central Plaza, Jiangyin.

📞 Tel: +86-510-81662184

✉ E-mail: info@maywonenergy.com

Thailand: Maywon Technology(Thailand)Co., Ltd.

🏠 Office: 1991 Soi Mu Ban Areeya Mandarin, Khwaeng Suan Luang, Khet Suan Luang, Bangkok 10250 Thailand

Warehouse: 995 / 4 BANGNA-TRADKM. 19, BANG CH ALONG, BANG PH LI, SAMUTPRAKARN, 10540

📞 Tel: 02-115-9610

✉ E-mail: huanhuan@maywonenergy.com

www.maywonpv.com

COMPANY PROFILE



Maywon PV Co., Ltd. is a high-tech leading enterprise in the field of solar PV industry, specialized in manufacturing, researching and providing customized efficient solutions for solar energy plans.

SET UP IN **2011** LOCATED IN **Jiangyin China**

Maywon was set up in 2011, with headquarters located in Jiangyin China and branch offices located in Shikoku Japan and Bangkok Thailand. After nearly 10 years development, we have built up long-term partnership with many famous solar energy companies all over the world.

HAS EXPORTED
Japan、Thailand
Australia、USA
Laos
the Middle East
etc.

Supported by the excellent technical team and sales team, Maywon has developed the Ground Mounting Solutions, Roof Mounting Solutions, Floating Mounting Solutions as well as Distributed Photovoltaic Power Generation Solutions and other customized solar mounting Solutions. And has exported solar panels, aluminum frames, solar mounting structures and other related accessories to Japan, Thailand, Australia, USA, Laos, the Middle East, etc. At any time, Maywon will provide the best services.

We MAY Sunshine at your home, WON Success in your life!

QUALITY

With Maywon, you will meet leading highest standard quality. All of our Aluminum profiles are made 6005-T5 with surface protection anodic oxidation 12-15 micron (μ), hooks and bolts are made of Stainless steel 304. Ground mounting systems that made of Q235 steel will be hot dip galvanized with a average thickness 80 micron (μ).Also we have Grounding mounting system are made of ZAM material which has higher corrosion resistance and surface hardness.

Australian Standard

- AS 1170.0-2002 Structural design Actions
- Part 0: General Principle
- AS 1170.2-2002 Structural design Actions
- Part 2: Wind actions
- AS 3566.1-2002 Self-drilling screws for the building and construction
- AS 3566.2-2002 Part 2: Corrosion resistance requirements
- AS 4600-2005 Cold formed Steel Structures

European Standard

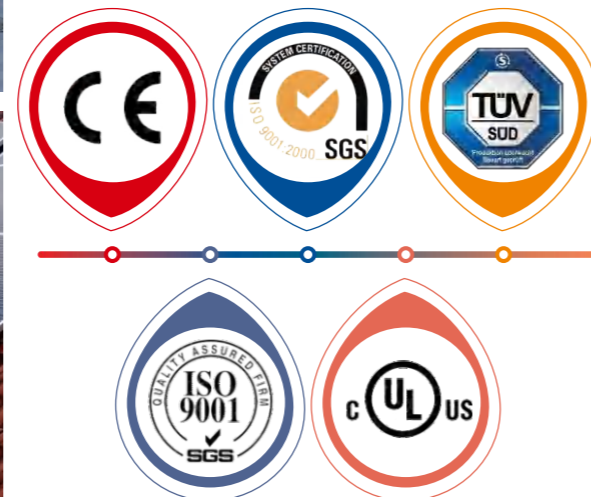
- BSEN 1990: 2002+A1: 2005
- Eurocode-Basis of structural design.
- BSEN 1991-1-3: 2003.
- Eurocode 1-Actions on structure-Part 1-2: General action-Snow loads.
- BSEN 1991-1-4: 2005
- Eurocode 1: Actions on structures-Part 1-2: General actions-Wind actions.

Japanese Standard

JIS C 8955: 2017 Load design guide on structures for photovoltaic array

CONTENTS

04	METAL SHEET MOUNTING
08	RAIL-FREE KLIP-LOCK MOUNTING
09	ADJUSTABLE ANGLE MOUNTING
12	TILE ROOF MOUNTING
13	GROUND MOUNTING
25	SOLAR MODULE FRAME
26	SOLAR MODULE
28	PRODUCT SERIES
34	PROJECTS REFERENCES



METAL SHEET MOUNTING

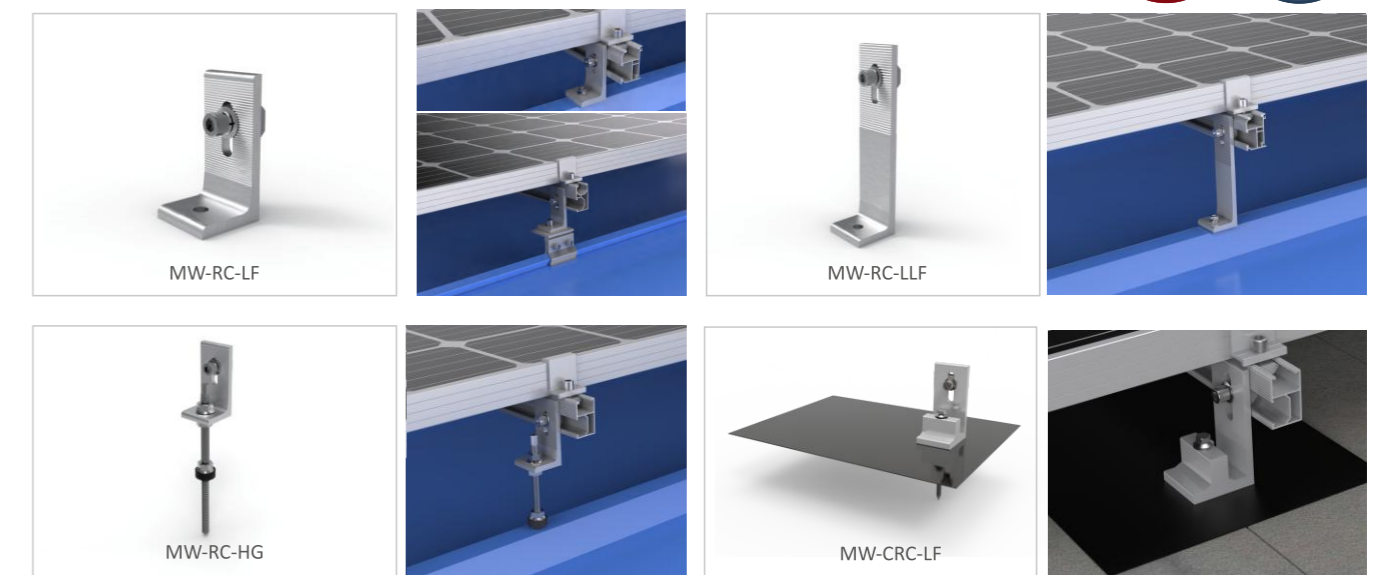
L FEET

Maywon-SunDepot have four type L Feet brackets, mainly applied to trapezoidal metal sheet roofs. It can be directly fixed on the roof beam with a screw, also can be used with other bracket system.

Features

1. Easy to install, safety and cost-effective	3. Waterproof EPDM rubber pad	
2. AL6005-T5, AA15 (Anodized 12-15µm)	4. Provided with SUS304 stainless accessories	
 Corrugated Metal Sheet	 Trapezoid Metal Sheet	

Installation



Hanger Bolt

Maywon-SunDepot's hanger bolt apply to install on both trapezoidal metal sheet and universal corrugated metal sheet roof.

Features

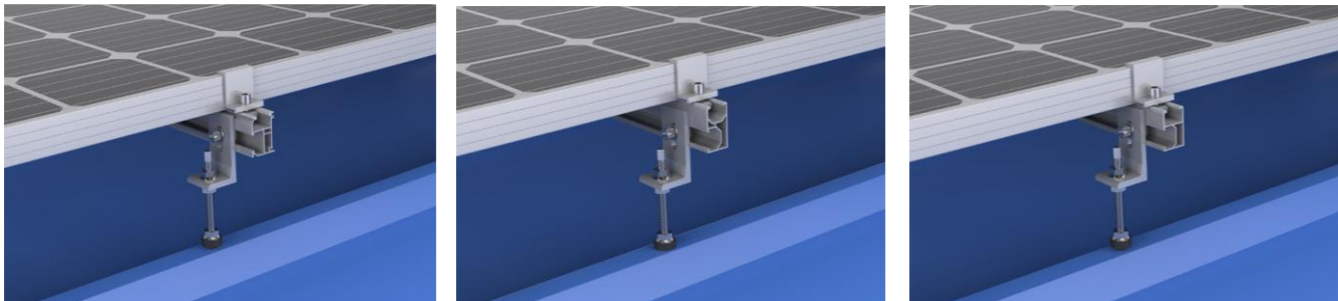
1.	Easy to install, safety and cost-effective	2.	AL6005-T5, AA15 (Anodized 12-15μm)
3.	Provided with SUS304 stainless accessorie		



MW-RC-HB



Installation



Cow Felt

Maywon-SunDepot's cow felt supply the best solution for Asphalt Shingles.

Features

1.	Easy to install, safety and cost-effective	2.	AL6005-T5, AA15 (Anodized 12-15μm)
3.	Provided with SUS304 stainless accessorie		



MW-CRC-LF

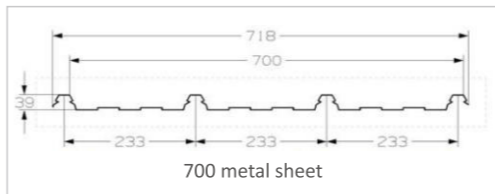
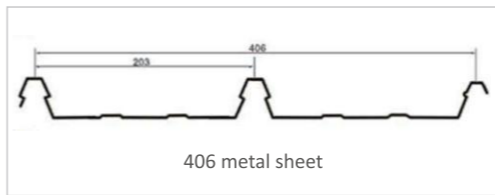


Installation



KLIP-LOCK 406 & 700

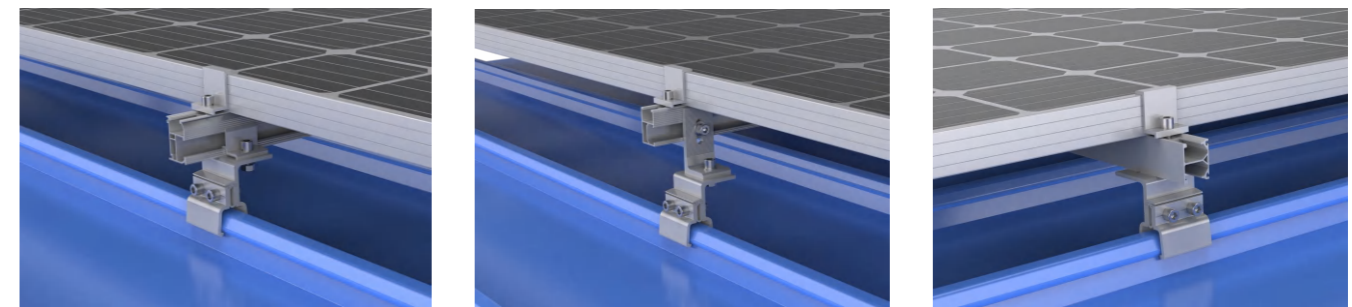
Maywon-SunDepot's Klip-lock 406 & 700 Clamp is designed for klip-lock 406 and 700 metal sheet roof. It's easy and convenient to install without drilling.



Features

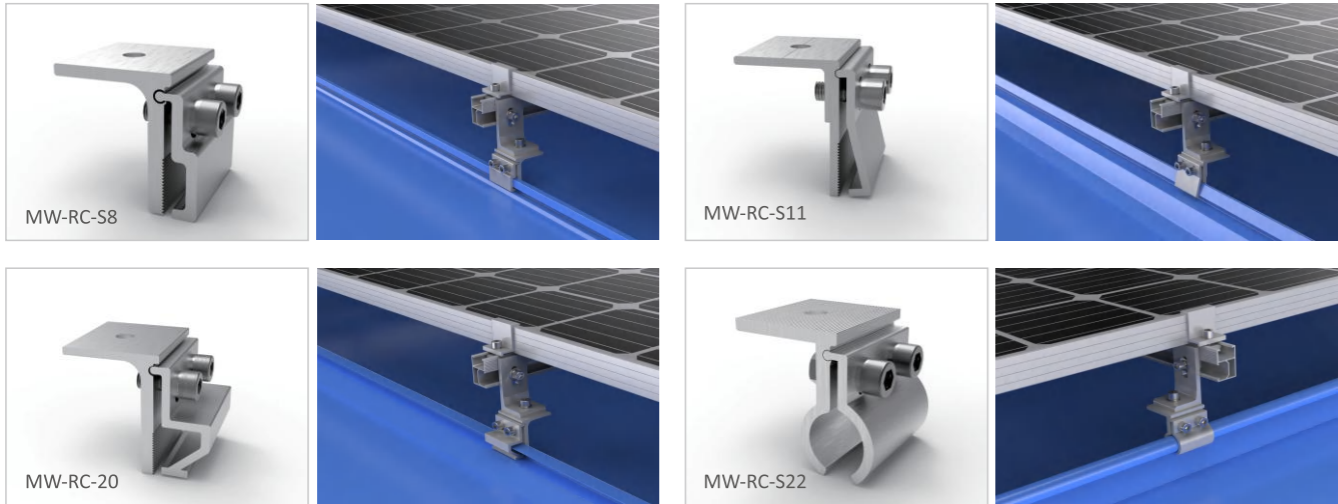
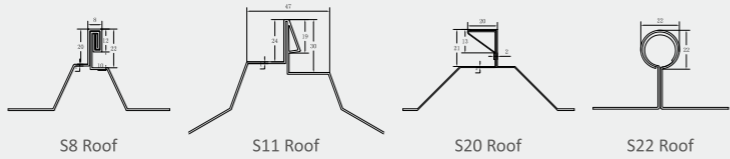
1.	Easy, fast and convenient to install
2.	AL6005-T5, AA15 (Anodized 12-15μm)
3.	Waterproof EPDM rubber integrated
4.	Provided with SUS304 stainless accessories

Installation



STANDING SEAM MOUNT

Maywon-SunDepot's Standing Seam series is designed to directly fixed to the some special metal sheet roofs. It's easy and convenient to install without drilling.



OTHER KLIP-LOCK CLAMPS



RAIL-FREE KLIP-LOCK MOUNTING

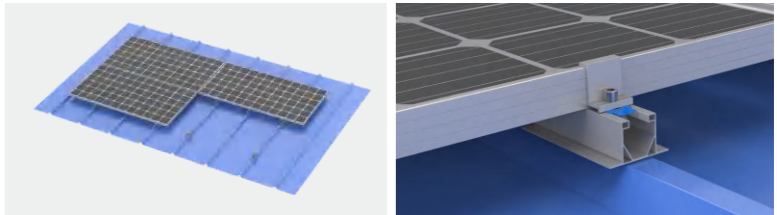
Maywon-SunDepot's rail-free clamps is designed for any metal sheet roofs without rails.

Features

1. Easy, fast and convenient to install	3. Waterproof EPDM rubber pad
2. AL6005-T5, AA15 (Anodized 12-15μm)	4. Rail free, cost-effective solution



Installation



ADJUSTABLE ANGLE MOUNTING



FRONT AND REAR LEG

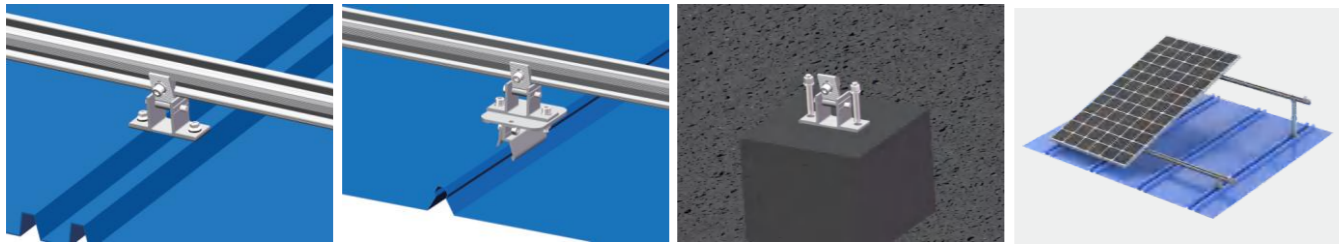
Maywon-SunDepot’s adjustable Front and Rear Leg is mainly applied to metal sheet roofs, flat cement roof and ground. It could be directly fixed to the metal sheet roofs or indirectly fixed to the roofs with proper klip-locks.

Features

- | | |
|----|---|
| 1. | Easy, fast and convenient to install |
| 2. | AL6005-T5, AA15 (Anodized 12-15μm) |
| 3. | Waterproof EPDM rubber pad |
| 4. | Adjustable length, flexible application |



Installation



TRIANGLE SUPPORT

Maywon-SunDepot’s Triangle Support is widely used on metal sheet roofs, flat roof and ground. The system designed to providing the durability and flexibility solutions that quick, light on the roof and easy to ship.



Features

- | | | | |
|----|--|----|---|
| 1. | AL6005-T5, AA15 (Anodized 12-15μm) | 3. | Pre-assembled to save time and easy to ship |
| 2. | Adjustable angle 10°-15°, 15°-30°, 30°-60° | 4. | Provided with SUS304 stainless accessories |

Installation



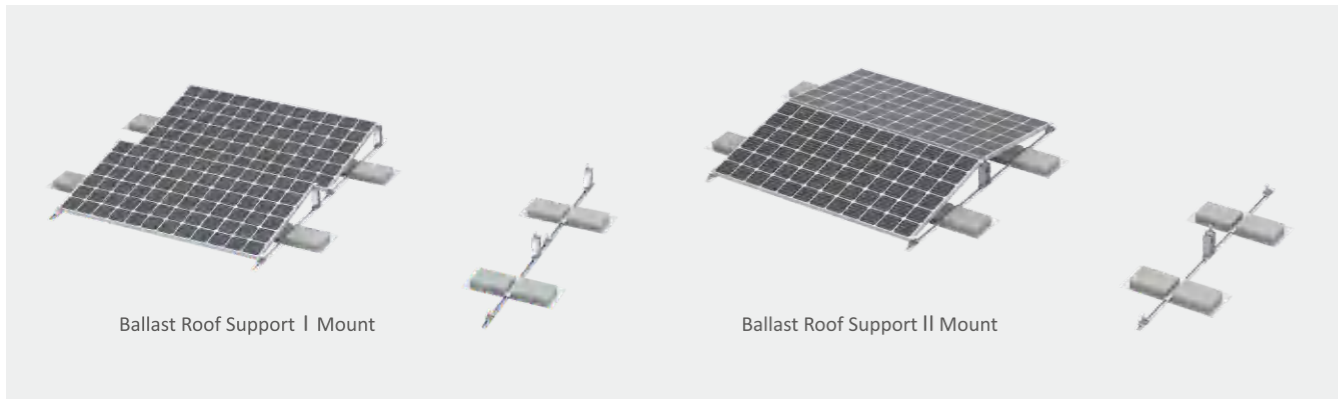
BALLAST ROOF SUPPORT

Maywon-SunDepot’s ballast roof support system has two structure. The system is a non-penetration solution for flat roof, and ground, achieves high wind resistance performance and fast onsite installation with concrete ballast and patented structure design.

Features

1.	Easy, fast and convenient to install
2.	AL6005-T5, AA15 (Anodized 12-15µm)
3.	High durability ensure the structure strength

Installation



Component Detail

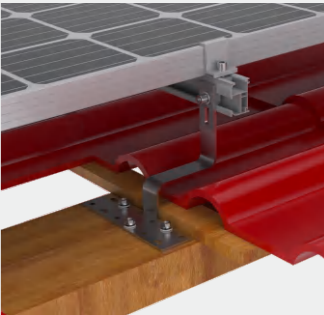


TILE ROOF MOUNTING

Maywon-SunDepot’s Hook Solution is especially designed for tile roof with wood beam, steel beam, cement beam and cement tile roof. In terms of tile surface types, they are mainly divided into s tile roof, flat tile roof, asphalt shingles roof. For different tile roofs, Maywon has designed more than 100 hook types to meet customer needs.

Features

1.	Easy, fast and convenient to install	3.	High Strength and Extension
2.	SUS304 material	4.	Surface Treatment on Corrosion Resistance



S TILE ROOF HOOK SERIES



FLAT TILE ROOF HOOK SERIES



ASPHAT SHINGLES ROOF HOOK SERIES





GROUND MOUNTING

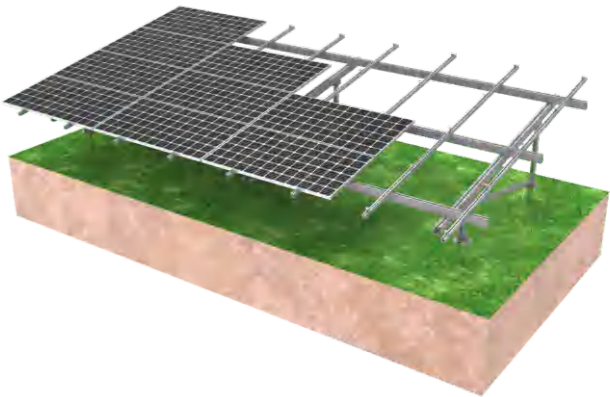
Maywon-SunDepot’s Ground Mounting Series is a ground solar PV mounting system improved from previous bracket Series. It’s welcomed by many customers because of its excellent wind and snow resistance. Moreover, it’s so convenient to transport and install as it has been pre-assembled before shipment. Maywon Ground Mounting Series is an ideal mounting system for middle-large scale projects which requires highly on corrosion resistance and structural strength.

Advantages


1.	Easy, fast and convenient to install
2.	Lower cost
3.	Excellent structural strength and snow resistance
4.	AL6005-T5, AA15 (Anodized 12-15μm)
5.	Provided with SUS304 accessories

AG6 Mount

Maywon-SunDepot’s solution AG6 is mainly used on ground projects and Car-park projects. It’s advantaged with high strength, pre-assembled structure and low cost.



Technical Data

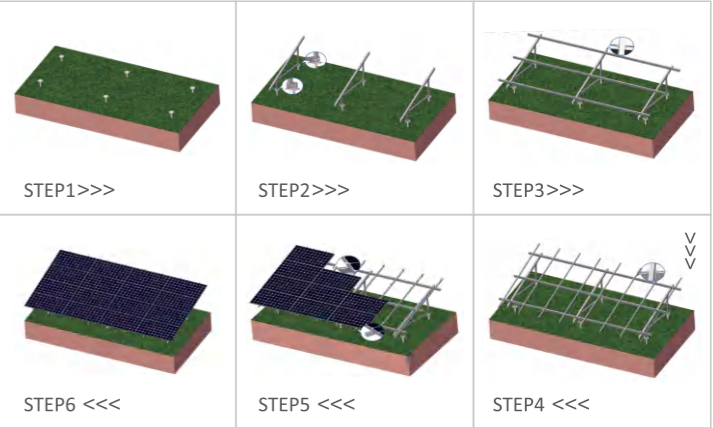
Installation Site	Ground	 Type N
Foundation	Cement Foundation or Screw Pile Foundation	
Tilt	0-60°	
Wind Load	Up to 60m/s	
Snow Load	Up to 100cm	
Material of Main parts	AL6005-T5, AA15	
Material of Accessories	SUS304	
Warranty	12 years for quality warranty and 25 years for usage warranty	

Component List

Pre-assembled AG6  MW-AG6-S	108 Rail  MW-R-108	50 Rail  MW-R-50	T Clamp Kit  MW-TC-T	End Clamp kit  MW-EC	Middle Clamp Kit  MW-MC	Support Tube  MW-AG6-ST	Screw Pile  MW-SP-2
--	---	---	---	---	--	--	--

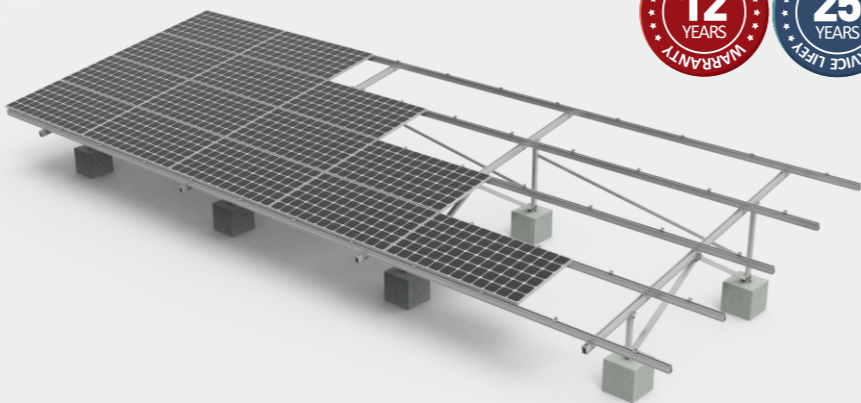
Installation Guide

- 1.Pile Screw Pile by pile drivers at certain positions and depth as indicated in solution drawing.
- 2.Fasten the front L Anchor Plate of AG6 Pre-assembled to the Screw Pile, and fasten the back L Anchor Plate of AG6 Pre-assembled to the Screw Pile.
- 3.Install 108 Rails,fasten them by T Clamp Kits.
- 4.Install 50 Rails,fasten them by T Clamp Kits.
- 5.Fasten Solar PV modules by Middle Clamp Kits and End Clamp Kits
- 6.The installation is complete.



AG7 Mount

Maywon-SunDepot’s solution AG7 is mainly used on ground projects. It’s advantaged with high strength, pre-assembled structure and low cost.



Technical Data

Installation Site	Ground
Foundation	Cement Foundation or Screw Pile Foundation
Tilt	0-60°
Wind Load	Up to 60m/s
Snow Load	Up to 50cm
Material of Main parts	AL6005-T5, AA15
Material of Accessories	SUS304
Warranty	12 years for quality warranty and 25 years for usage warranty



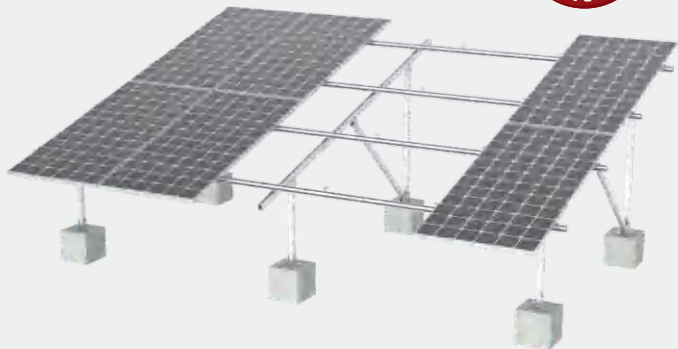
Type W

Component List

<div>Pre-assembled AG7</div>  <div>MW-AG7-S</div>	<div>Conical symmetrical cross beam 90</div>  <div>MW-R-90</div>	<div>Splice for Conical symmetrical cross beam 90</div>  <div>MW-SP-90</div>	<div>C Clamp Kit</div>  <div>MW-CC-40</div>
	<div>End Clamp Kit</div>  <div>MW-WEC-40</div>	<div>U Middle Clamp Kit</div>  <div>MW-UMC</div>	<div>T Type Base</div>  <div>MW-AG7-TB</div>

AG8 Mount

Maywon-SunDepot’s solution AG8 is mainly used on ground projects. It’s advantaged with high strength, pre-assembled structure and lower cost.




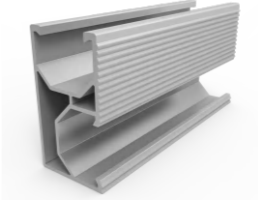



Technical Data

Installation Site	Ground
Foundation	Cement Foundation or Screw Pile Foundation
Tilt	0-60°
Wind Load	Up to 60m/s
Snow Load	Up to 50cm
Material of Main parts	AL6005-T5, AA15
Material of Accessories	SUS304
Warranty	12 years for quality warranty and 25 years for usage warranty



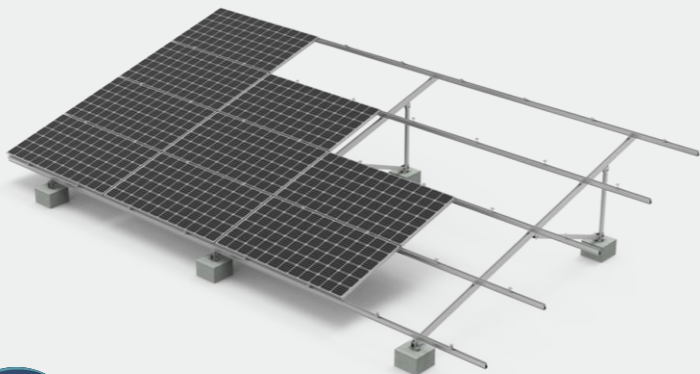
Type V

Component List

<div>Pre-assembled AG8</div>  <div>MW-AG8-S</div>	<div>Premium Rail</div>  <div>MW-R-PR</div>	<div>Connector</div>  <div>MW-SP-R</div>
<div>Side Clamp Kit</div>  <div>MW-SC-40</div>	<div>End Clamp kit</div>  <div>MW-EC</div>	<div>Middle Clamp Kit</div>  <div>MW-MC</div>

AG9 Mount

Maywon-SunDepot’s solution AG9 is mainly used on ground or flat roof projects. It’s advantaged with high strength, pre-assembled struture and lower cost.



Technical Data

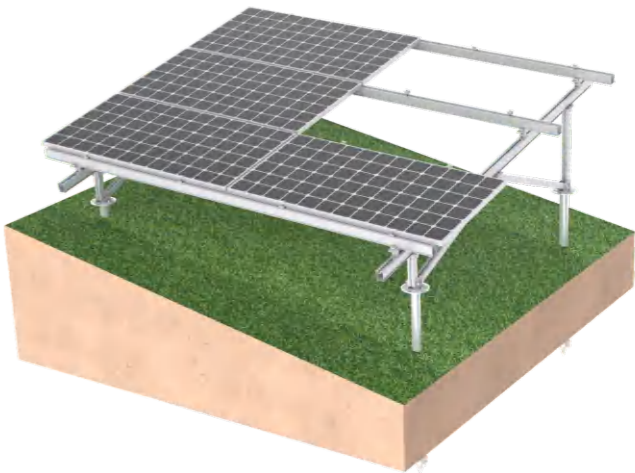
Installation Site	Ground	
Foundation	Cement Foundation or Screw Pile Foundation	
Tilt	0-60°	
Wind Load	Up to 60m/s	
Snow Load	Up to 50cm	
Material of Main parts	AL6005-T5, AA15	
Material of Accessories	SUS304	
Warranty	12 years for quality warranty and 25 years for usage warranty	

Component List

Pre-assembled AG9 MW-AG9-S	70 Rail MW-R70	Splice for 70 Rail MW-SP-70
C Clamp Kit MW-CC-AG9	End Clamp Kit MW-EC	Middle Clamp Kit MW-MC

AG Slope Mount

Maywon-SunDepot’s AG Slope Mounting Solution allows to adjust the surface slope from all directions (east-west, south-north). It’s widely-used to resolve the slope problem, also easy to install.



Technical Data

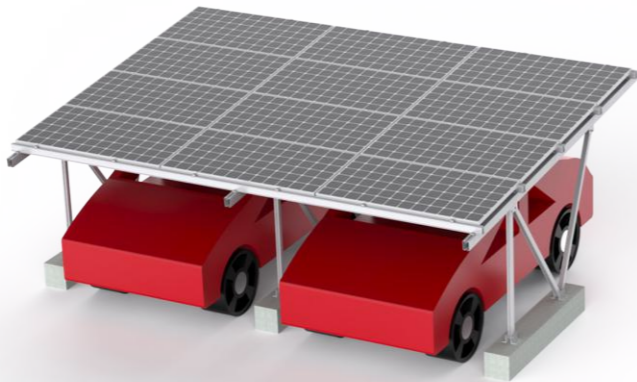
Installation Site	Ground	
Foundation	Cement Foundation or Screw Pile Foundation	
Tilt	0-60°	
Wind Load	Up to 60m/s	
Snow Load	Up to 50cm	
Material of Main parts	AL6005-T5, AA15	
Material of Accessories	SUS304	
Warranty	12 years for quality warranty and 25 years for usage warranty	

Component List

Pre-assembled AG MW-AG7-S	Conical symmetrical cross beam 90 MW-R-90	Splice for Conical symmetrical cross beam 90 MW-SP-90	Connectors for Slope Structure MW-AG-SS
C Clamp Kit MW-CC-40	End Clamp Kit MW-WEC-40	U Middle Clamp Kit MW-UMC	T Type Base MW-AG7-TB

Carport Mount System

Maywon-SunDepot’s carport supports an effective solar system while providing a shelter for cars. It’s advantaged with high strength, pre-assembled struture and lower cost.



Technical Data

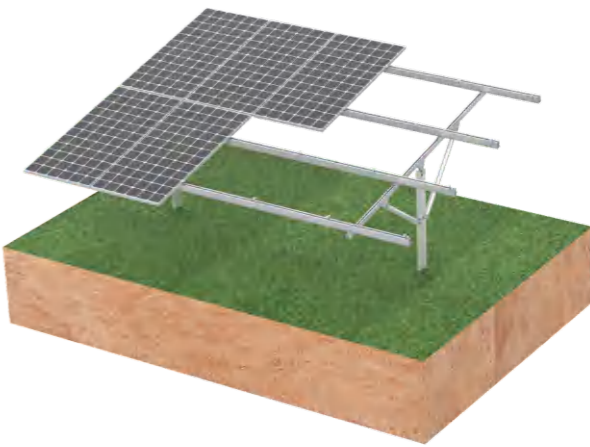
Installation Site	Ground	
Foundation	Cement Foundation or Screw Pile Foundation	
Tilt	0-60°	
Wind Load	Up to 60m/s	
Snow Load	Up to 50cm	
Material of Main parts	AL6005-T5, AA15	
Material of Accessories	SUS304	
Warranty	12 years for quality warranty and 25 years for usage warranty	

Component List

<div>Pre-assembled AG</div> <div>SMW-AG6-S</div>	<div>Conical symmetrical cross beam 90</div> <div>MW-R-90</div>	<div>Splice for Conical symmetrical cross beam90</div> <div>MW-SP-90</div>
<div>C Clamp Kit</div> <div>MW-CC-CA</div>	<div>End Clamp Kit</div> <div>MW-WEC</div>	<div>U Middle Clamp Kit</div> <div>MW-UMC</div>

SG5 Mount

Maywon-SunDepot’s SG5 Mounting Solution is designed for rough lands like agricultural land, mountain land, hills and slopes. Superior to traditional solutions, it’s environment friendly, no need of flat land preparation and large mechanical machine.



Technical Data

Installation Site	Ground	
Foundation	Cement Foundation or Screw Pile Foundation	
Tilt	0-60°	
Wind Load	Up to 60m/s	
Snow Load	Up to 50cm	
Material of Main parts	Q235B (Hot-dip Galvanizing) & AL6005-T5,AA15	
Material of Accessories	SUS304	
Warranty	12 years for quality warranty and 25 years for usage warranty	

Component List

<div>H beam single plie</div> <div>MW-HB-S</div>	<div>85 rail</div> <div>MW-R-85</div>	<div>splice for 85 rail</div> <div>MW-SP-85</div>
<div>C Clamp Kit</div> <div>MW-CC-S40</div>	<div>End Clamp Kit</div> <div>MW-WEC-40</div>	<div>U27 Inter Clamp Kit</div> <div>MW-MC-U27</div>

SG6 II Claw Mount

Maywon-SunDepot’s SG6 II Claw Mounting System use the new material ZAM, the strength is higher and the corrosion resistance is stronger than SG6 I , is designed for rough lands like agricultural land, mountain land, hills and slopes. Superior to traditional solutions, it’s environment friendly, no need of flat land preparation and large mechanical machine.



Technical Data

Installation Site	Ground	
Foundation	Cement Foundation or Screw Pile Foundation	
Tilt	0-60°	
Wind Load	Up to 60m/s	
Snow Load	Up to 50cm	
Material of Main parts	ZAM Steel & AL6005-T5,AA15	
Material of Accessories	SUS304	
Warranty	12 years for quality warranty and 25 years for usage warranty	

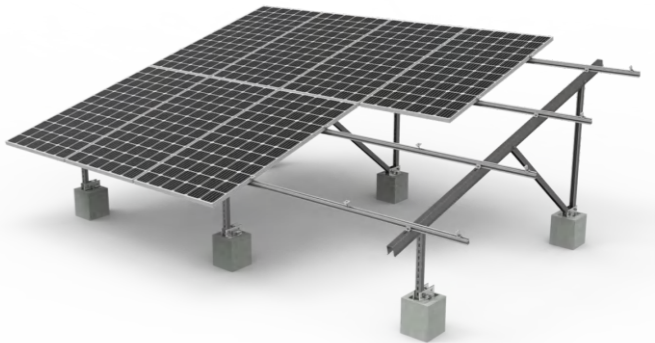
Component List

Pre-assembled SG6 II MW-SG6 II	Sleeve MW-SG6 II -S	Universal Rail MW-R-UR	Side Clamp Kit MW-SG6 -SC
End Clamp kit MW-EC	Middle Clamp Kit MW-MC	Front Intubates MW-SG6 II -RI	Rear Intubates MW-SG6 II -FI



SG7 Mount

Maywon-SunDepot’s SG7 Mounting System use the new material ZAM, have higher strength and stronger corrosion resistance, can be designed for rough lands like concrete land, flat roof and so on with expansion bolt. Superior to traditional solutions, it’s environment friendly, no need large mechanical machine.



Technical Data

Installation Site	Ground	
Foundation	Cement Foundation or Screw Pile Foundation	
Tilt	0-60°	
Wind Load	Up to 60m/s	
Snow Load	Up to 50cm	
Material of Main parts	ZAM Steel & AL6005-T5,AA15	
Material of Accessories	SUS304	
Warranty	12 years for quality warranty and 25 years for usage warranty	

Component List

Pre-assembled SG7 MW-SG7-S	L Type Susceptor MW-SG6-LTS	Universal Rail MW-R-UR	Splice for universal rail MW-SP-UR
Side Clamp Kit MW-SG6-SC	End Clamp kit MW-EC	Middle Clamp Kit MW-MC	

Screw Piles

Maywon-SunDepot’s Screws Piles are specially developed for solar PV mounting systems.MW Screw Piles series includes various types of ground screws which will fit into different soil conditions.MW Screws could also be customized.

Technical Data

- ◆ No need to drill to make concrete base. The screw pile could be punched into the ground with pile driver.
- ◆ Compared with traditional concrete pile, screw pile installation is easy, fast and economical.
- ◆ Fast Installation available for full day 24 hours
- ◆ 100% environment friendly, recyclable and could be moved anytime anywhere.



Soil Test Result

Soil Type	Testing Force	MW-76*1200	MW-76*1600
Gravel	Compression Resistance	24.1(KN)	32.3(KN)
	Uplift Resistance	14.3(KN)	19.9(KN)
Sand	Compression Resistance	20.8(KN)	28.8(KN)
	Uplift Resistance	15.0(KN)	21.0(KN)
Clay	Compression Resistance	15.1(KN)	20.2(KN)
	Uplift Resistance	12.2(KN)	16.0(KN)



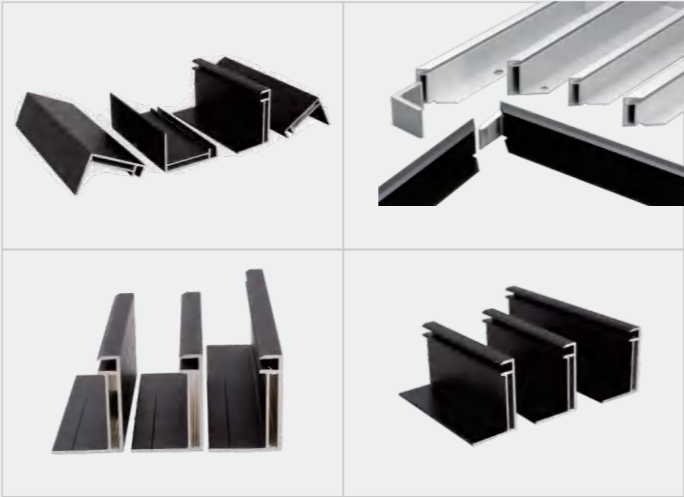
Floating Mounting System

Maywon-SunDepot’s floating mounting System is suitable for water installation. The material is made of high-density polyethylene (HDPE). It meets the test standards of Hunt water absorption test (CN), anti aging and UV resistance. It can withstand far more than similar products at home and abroad. The pontoon adopts multi style modular design to meet the installation requirement of various layout modes. The installation is simple and convenient, the project cost is reduced and the service life is long.



SOLAR MODULE FRAME

Maywon-SunDepot's solar module frame is used to fix and seal solar cell components, enhance the strength of components, extend the service life, facilitate transportation and installation. Maywon can produce different sizes and specifications of products in accordance with customer drawings or samples. Excellent quality and excellent production capacity.



Production steps



Extrusion



Aging



Anodization



Filming



Transportation



Packing



Punching



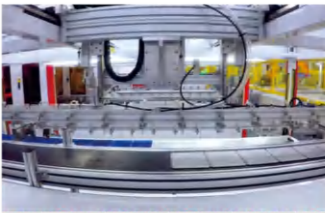
Cutting



SOLAR MODULE



HT-SAAE and Tunghsu are Maywon's solar module Partner. They solar module production lines have achieved full Production capacity. The production lines are adopted by intelligent control of highest level in the solar industry with the best control ability on every production process. The auto soldering lines are operated by robot synchronized position and CCD inspection which make sure the tolerance of soldering size for the cells. The lamination process are operated by total auto intelligence mode with double halls & double presses. Comparing to the regular lamination lines, The production efficiency lines are increased by 50% either on temperature controlling or vacuum speed. The production lines can compatible half-cells, multi-busbar-cells and pieces-cells soldering with the average power output over 500W and highest trans-efficiency by 20%.



Advantages

- ◆ Advanced production equipment, International first-class production technology, Achieved high module conversion efficiency 18.0%.
- ◆ Excellent performance for resist wind presson and snow load, full module passed wind presson and snow load, full module passed wind presson (2400Pa) and snow load (5400Pa) test
- ◆ Excellent weak light performance, Resistant to salt spray and ammonia corrosion
- ◆ Passing the certification test of photovoltaic standards
- ◆ Certified by international quality management and environmental management system ISO9001, OHSAS18001, ISO14001
- ◆ Application grade: A grade, Safe class: II , Fireproofing grade: C

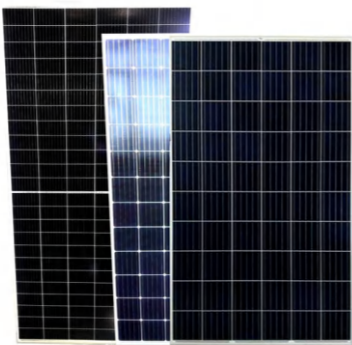
Small Power Solar Panel

Maywon-SunDepot is specializing in small PV modules. Our company is mainly engaged in the PV cells, PV modules and the design, development, production and sales of photovoltaic system. Our products are widely used in front-end areas, such as commercial, household and industrial off-grid and grid-connection solar power generation system as well as photovoltaic power station etc.



High Power Solar Panel

Maywon-SunDepot’s is also specializing in large PV modules. Our company have a lot of large-scale project installation experience, and our solar module partner is Tier 1.



PRODUCT SERIES

PV Connector

Main Speciality

- ◆ All the connection made by double fixed connection
- ◆ With the capacity of anti-aging and resistance to ultraviolet radiation on the outer cover
- ◆ With convenient installation, strong commonality
- ◆ To meet the using requirement under bad outdoor condition
- ◆ Lower power loss



Technical Date

Insulation Material	Contact Material	Rated Current	Rated Voltage	Test Voltage	Contact Resistance	Degree of Protection	Ambient Temperature Range	Flame Class	Safety Class	Pin Dimensions
PPO	Copper, Tin plated	30A	1000V (TUV) 600V (UL)	8KV (TUV50HZ, 1min)	<0.5MΩ	IP 67	-40℃~+85℃	UL 94-V0	II	ø4mm

PV Cable



Main Speciality

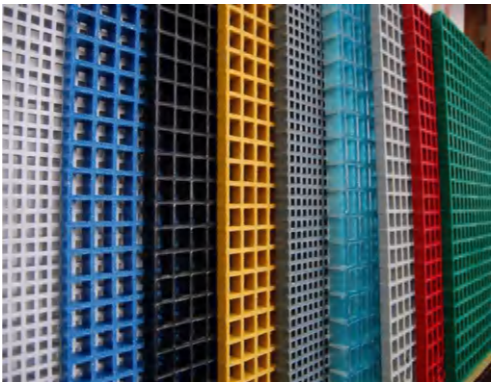
- ◆ Insulation material : XLPE
- ◆ Double insulation jackets, all-weather adaptability: resistance to UV, oil fat, oxygen and ozone
- ◆ Halogen-free, inflaming retarding, low toxic material
- ◆ Good abrasion resistance, excellent softness and stripping performance
- ◆ High current carrying capacity

Type	Cross section	Strand design	Conductor diameter	Outer diameter	Conductor resistance	Rated voltage	Rated current
	mm²	No.x(φmm)	mm	mm	Ω/Km	VAC/DC	A
PV-1×1.5mm²	1.5	30×φ0.25	1.58	5.20	13.7	1000/1800	20A
PV-1×2.5mm²	2.5	49×φ0.25	2.05	5.40	8.21	1000/1800	30A
PV-1×4.0mm²	4.0	56×φ0.30	2.59	6.20	5.09	1000/1800	50A
PV-1×6.0mm²	6.0	84×φ0.30	3.42	7.00	3.39	1000/1800	70A
PV-1×10mm²	10.0	84×φ0.40	4.56	9.00	1.95	1000/1800	95A
PV-1×16mm²	16.0	128×φ0.40	5.60	10.30	1.24	1000/1800	105A
PV-1×25mm²	25.0	192×φ0.40	7.25	12.20	0.795	1000/1800	140A
PV-1×35mm²	35.0	276×φ0.40	8.74	13.80	0.565	1000/1800	170A

Solar Walkway

Advantages

- ◆ Corrosion resistance
- ◆ Light weight, high strength, and easy to cut and install
- ◆ Aging resistance, Long life
- ◆ Flame retardant, high safety performance
- ◆ Colors can be chosen at will. Never fade, rust
- ◆ Strong designability



Solar Inverter

Maywon-SunDepot's solar inverter is suitable for all types of photovoltaic modules, grid connected system, independent microgrid system, residential system and commercial system within megawatt level.

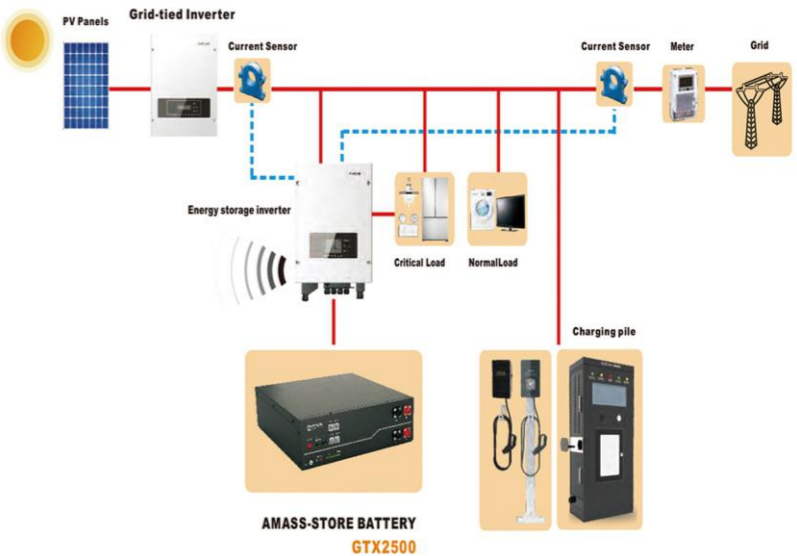


Solar store Battery

Maywon-SunDepot's is solar store battery are widely used in all kinds of solar photovoltaic power generation.

Advantages

- ◆ Compatible with multi-brand storage inverters
- ◆ Long cycle life energy storage battery (6000 times)
- ◆ Simple stack installation, time and cost saving
- ◆ Han's Laser automated PACK production line, stable and reliable production quality
- ◆ One-button automatic assignment battery module ID, simple and convenient operation
- ◆ Remote diagnosis and real-time data monitoring
- ◆ Certification of IEC62619, UN38.3, IEC62040-1, SAA etc



MW-R-UR	
	
Item	Universal rail
Material	AL6005-T5, AA15
Size(mm)	32.8*46.8
Package	4 pcs/pack

MW-R-SR	
	
Item	Sliver Rail
Material	AL6005-T5, AA15
Size(mm)	28*43.8
Package	4 pcs/pack

MW-R-ZLS	
	
Item	Light Symmetric Rail
Material	AL6005-T5, AA15
Size(mm)	31*39
Package	4 pcs/pack

MW-R-PR	
	
Item	Premium Rail
Material	AL6005-T5,AA15
Size(mm)	28*50
Package	4 pcs/pack

MW-R-T15	
	
Item	T15 Rail
Material	AL6005-T5, AA15
Size(mm)	30*48
Package	4 pcs/pack


MW-R-90	
	
Item	Conical symmetric cross Rail 90
Material	AL6005-T5
Size(mm)	61.6*90
Package	2 pcs/pack

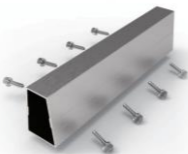
MW-R70	
	
Item	Rail70
Material	AL6005-T5
Size(mm)	45*70
Package	2 pcs/pack


MW-TSR-SP	
	
Item	Connector
Material	AL6005-T5
Size(mm)	L150
Package	200 pcs/carton




MW-SP-UR	
	
Item	Splice for Universal rail
Material	AL6005-T5
Size(mm)	L150
Fixture	M8*15 Hexagon socket screw
Package	200 pcs/carton

MW-SP-ZLS	
	
Item	Splice for Light Symmetric Rail
Material	AL6005-T5
Size(mm)	L100
Fixture	M8*10 Hexagon socket screw
Package	400 pcs/carton

MW-SP-S90	
	
Item	Splice for Conical symmetric cross Rail 90/87
Material	AL6005-T5
Size(mm)	L260
Fixture	Tapping Screw ST6.3*19
Package	36 pcs/carton

End Clamp Kit		32/35 End Clamp Kit MW-EC-35					40 End Clamp Kit MW-EC-40				
	Fixture	End Clamp	Slider Nut A	Bolt	Spring Washer		Fixture	End Clamp	Slider Nut A	Bolt	Spring Washer
	Size	L=40		M8*25	8		Size	L=40		M8*25	8
	Package	400 pcs/carton					Package	400 pcs/carton			
	Item	45 End Clamp Kit MW-EC-45					Item	50 End Clamp Kit MW-EC-50			
	Fixture	End Clamp	Slider Nut A	Bolt	Spring Washer		Fixture	End Clamp	Slider Nut A	Bolt	Spring Washer
	Size	L=40		M8*25	8		Size	L=40		M8*25	8
	Package	400 pcs/carton					Package	400 pcs/carton			

Middle Clamp Kit		32/35 Middle Clamp Kit MW-MC-35					40 Middle Clamp Kit MW-MC-40				
	Fixture	Middle Clamp	Slider Nut A	Bolt	Spring Washer		Fixture	End Clamp Kit	Slider Nut A	Bolt	Spring Washer
	Size	L=40		M8*45	8		Size	L=40		M8*50	8
	Package	400 pcs/carton					Package	400 pcs/carton			
	Item	45 Middle Clamp Kit MW-MC-45					Item	50 Middle Clamp Kit MW-MC-50			
	Fixture	End Clamp Kit	Slider Nut A	Bolt	Spring Washer		Fixture	End Clamp Kit	Slider Nut A	Bolt	Spring Washer
	Size	L=40		M8*55	8		Size	L=40		M8*60	8
	Package	400 pcs/carton					Package	400 pcs/carton			

MW-AT-TS	
	
Item	Triangle Support
Material	AL6005-T5,AA15
Size(mm)	L1050,L1450
Package	4 pcs/carton

MW-AT-FL	
	
Item	Front Leg Set
Material	AL6005-T5,AA15
Size(mm)	L40
Package	80 pcs/carton

MW-AT-RL	
	
Item	Rear Leg Set
Material	AL6005-T5,AA15
Size(mm)	L220,L360
Package	25 pcs/carton

MW-SG6-SC	
	
Item	U Side Clamp Kit
Material	AL6005-T5
Size(mm)	L40
Package	400 pcs/carton

MW-SC-40	
	
Item	P Side Clamp Kit
Material	AL6005-T5
Size(mm)	L40
Package	400 pcs/carton

MW-EC-TF80	
	
Item	Thin Film End Clamp Kit
Material	AL6005-T5
Size(mm)	M8*40 Hexagon socket screw
Package	200 pcs/carton

MW-MC-TF80	
	
Item	Thin Film Middle Clamp Kit
Material	AL6005-T5
Size(mm)	M8*40 Hexagon socket screw
Package	200 pcs/carton

MW-G-GL	
	
Item	Grounding Lug
Material	AL6005-T5
Size(mm)	20
Package	800 pcs/bag

MW-G-GP

	
Item	Grounding Plate
Material	SUS304
Size(mm)	30*32
Package	500 pcs/bag

MW-CC-204

	
Item	Cable Clip
Material	SUS304
Size(mm)	2/4 wire
Package	500 pcs/bag

MW-CBC-MC2/4

	
Item	PV Connector
Size	MC3/4
Package	10 pair/bag

MW-CB

	
Item	PV Cable
Size(mm²)	4/6
Package	100 m/roll

Safety Torque Reference Table of Maywon Stainless Steel Fastener

Unit:N.m

Size	M6-1.0	M8-1.25	M10-1.5	M12-1.75	M14-2.0
Safety Torque	9	20	40	55	100

Size	M16-2.0	M18-2.5	M20-2.5	M22-2.5	M24-3.0
Safety Torque	150	180	220	400	510

WAREHOUSING



LOGISTICS

